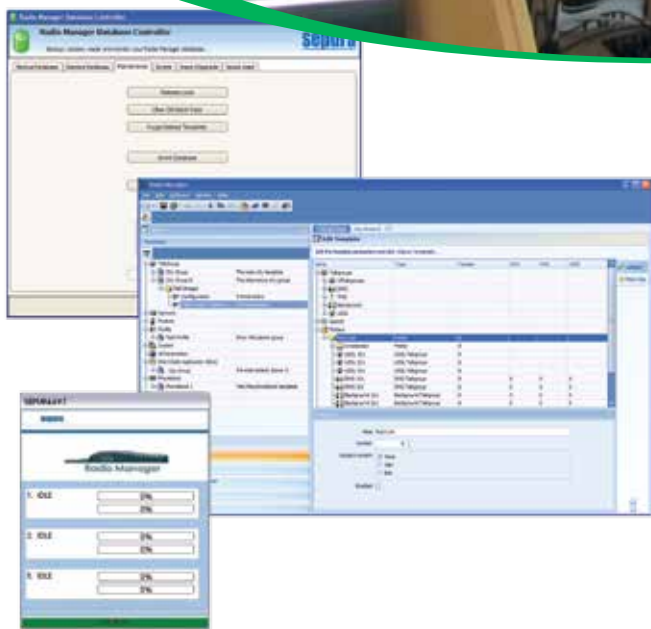


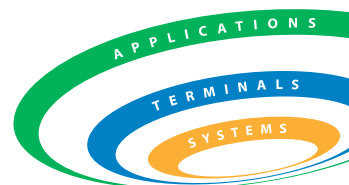
# RADIO MANAGER 2

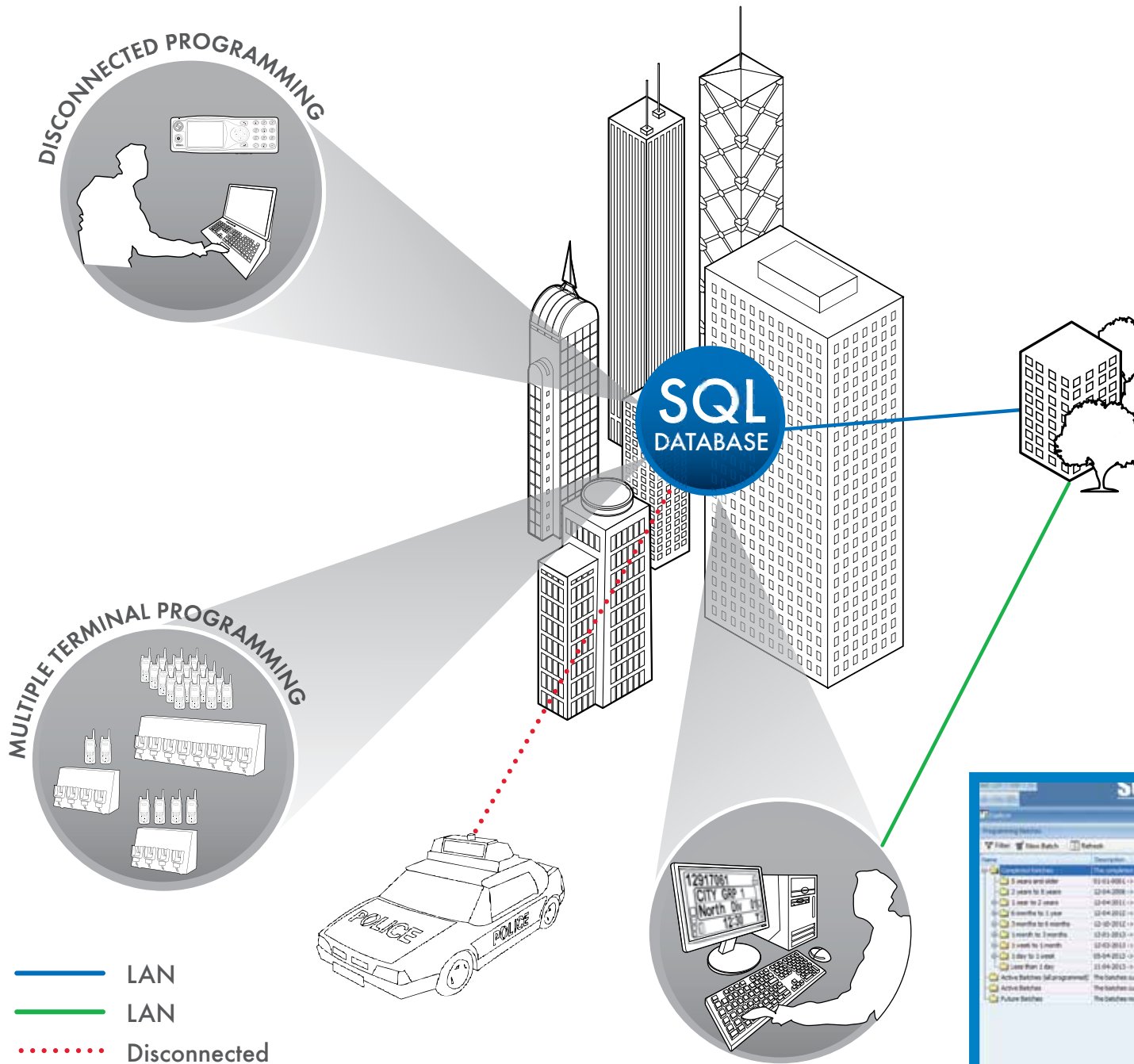


Radio Manager 2 is the next generation in Sepura's ongoing commitment to provide the best automated radio programming tool on the market. Highly intuitive and with excellent workflow, Radio Manager 2 enables organisations to realise outstanding time and cost savings.



Going further in critical communications





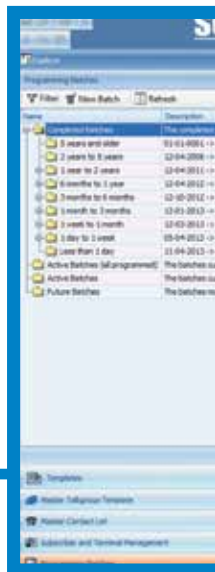
## SEPURA RADIO MANAGER 2:

Radio Manager 2 is a radio programming tool that can be scaled to meet the needs of all Sepura customers, whether they are local, regional or national organisations.

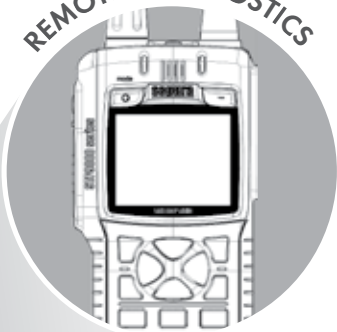
Available in standalone or client server configurations, the system can expand to support the largest fleet size. In order to achieve automatic radio programming, Radio Manager 2 provides the facilities both to map users to radios and to design configuration files (templates) in advance of the programming operation. The templates are assigned to specific radios so that

these are automatically updated when connected to a programming position. By automating the programming process, a radio can be updated by any user without either the need for it to be returned to a workshop or the intervention of a skilled technician.

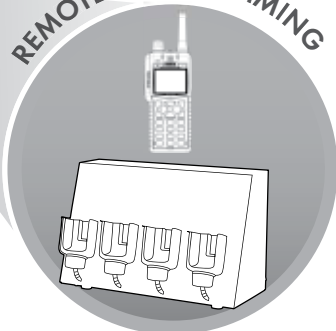
At the heart of Radio Manager 2 lies a powerful database that is used to manage the entire radio fleet. The reporting facilities give visibility of each radio, so that the operator can determine the configuration from the saved records, while back-up utilities guarantee data



REMOTE DIAGNOSTICS



REMOTE PROGRAMMING



KEY BENEFITS:

- > Significant time and cost savings
- > Control and traceability of terminal programming
- > Program multiple radios simultaneously
- > Geographically distributed programming stations
- > All operations are controlled from a central database
- > Improved workflow
- > Automatic programming (no manual intervention required)
- > Remote Diagnostics

KEY FEATURES:

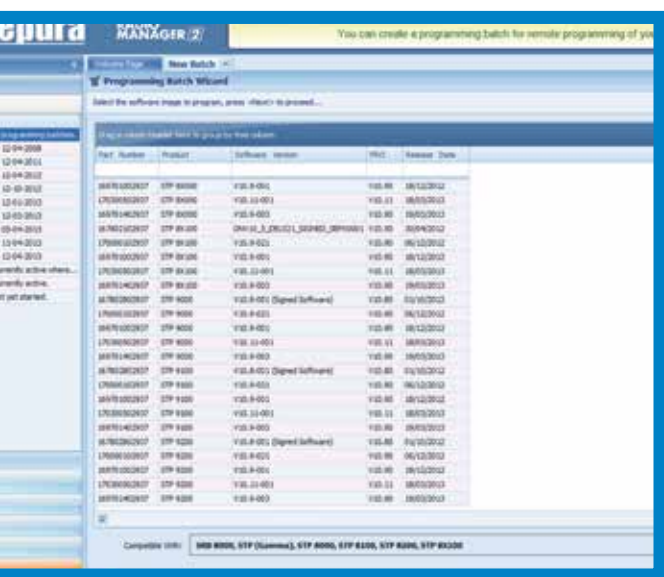
- > Program all Sepura radios
- > Program multiple radios simultaneously
- > Mapping and recording of ISSI and TEI association
- > Associate customisation with ISSI
- > Automatically detect software upgrades
- > Terminal validation using TEI
- > 3rd Party Interface for fleet map imports
- > API - supports XML control from external applications
- > Simple, intuitive user interface
- > User configurable access levels
- > Multiple languages
- > Phonebook template
- > Generic templates
- > SQL database

CONNECTIVITY OPTIONS:

- > Radio Manager 2 can be run standalone
- > Remote clients can be connected to a Server
- > Clients can be connected by LAN
- > Client-Server connection can be wired or wireless
- > Disconnected/USB Client
  - > Connect terminals to Client by:
    - > Direct physical connection to serial port
    - > Via USB
    - > Via serial port concentrators

SYSTEM REQUIREMENTS:

Please see [seapura.com](http://seapura.com) for the latest system requirements.



security and continuity. Access level permissions can be set for different operators, who can use Radio Manager 2 simultaneously from different workstations.

Programming batches are easily identified from the status monitor. The progress of each can be tracked at any point in time. Each job has a start and end date allowing a chronological log and an associated software version for each terminal in the fleet. This allows full version control and logging of the status of all terminals, thus ensuring complete management of the fleet.

---

Enabling users to make significant operational time and cost savings.

---

# RADIO MANAGER 2

## AUTOMATIC UPDATES

Records are maintained for each radio in the fleet, including the customisation and software version. When the fleet's customisation or software is required to be upgraded, any radio presented to the Sepura Radio Manager 2 with an old customisation will be automatically upgraded. The user defines a programming batch which specifies customisation templates and software versions for radios within the fleet; and a start and end time. Any radio included in the batch and presented to a client within this time will be programmed to those specifications; real time remote reporting is available throughout this process.

## TERMINAL VALIDATION USING TEI

Suitable for users with very small numbers of terminals and who only require limited functionality.

Radio Manager 2 identifies a radio by its TEI. It will then look to see if an ISSI is associated with this TEI, if not it will (optionally) log the current ISSI against the TEI, or allocate a free ISSI. If an ISSI has been associated with a TEI within the Sepura Radio Manager 2 the Terminal will be customised with the ISSI if it has been scheduled for an upgrade.

## MULTIPLE TERMINAL PROGRAMMING SUPPORT

Radio Manager 2 will support up to 32 terminals connected simultaneously per client application. The restriction on the number of clients running on any one PC is limited only by the hardware performance of the PC. This facility will enable users to make considerable savings in time and resources when updating terminals.

## INTERFACING TO EXTERNAL APPLICATIONS

A number of options are available for connecting Radio Manager 2 to a third party application:

- An external spreadsheet containing fleet map data can be imported.

- A third party fleet mapping application can be directly interfaced via a fleet mapping application programming interface (API).
- XML Operations Interface (Xoi) allows automatic control of programming batches, radio terminal configuration and pairing and report generation from third party applications such as asset databases<sup>1</sup>.

## USER CONFIGURABLE OPTIONS

Access level permissions can be set within the programmer such that different users can be permitted to modify predetermined customisations. For example, one user may be given permission to create new customisations, while other users are only permitted to edit specific existing customisations.

## TEMPLATES

Each customisation is created from a number of standard sets of parameters known as templates. There are two types of templates, standard templates supplied by Sepura, which typically cover specific network suppliers, specific networks and a specific product, and customer templates created by the user. These customer templates will apply to their specific tasks. These can be job specific or working group specific and typically contain fleet map information and user profiles (e.g. soft key mapping).

## SECURE PROGRAMMING

To prevent unauthorised programming of radios or interrogation of the configuration of a radio, Radio Manager 2 provides a mechanism to authenticate a radio before performing any actions. This allows radios to be associated with one or more authorised Radio Managers from which they can be programmed or their configuration interrogated. All unauthorised Radio Managers will be prevented from accessing the radio or programming it. This enables organisations to maintain control over radios

and prevent the programming or interrogation of radios by unauthorised persons. Secure programming can be applied as a general policy or set on an individual radio basis.

## STANDARD CONFIGURATIONS

Radio Manager 2 is available in different configurations allowing the scale and cost point to reflect the needs of the end user. Radio Manager 2 is based upon four standard configurations; each of these configurations can be enhanced by adding upgrade options.

Radio Manager 2 consists of a software package and a licence to enable the activation of the required features. Each of the following product licences provides one of the four standard configurations of Radio Manager 2:

### RADIO MANAGER 2 EL

Suitable for users with very small numbers of terminals and who only require limited functionality.

### RADIO MANAGER 2 LITE

Suitable for distributors or users with very small numbers of terminals.

**RADIO MANAGER 2 STANDARDS** Suitable for organisations who require multi-terminal programming from a single location.

### RADIO MANAGER 2 SERVER

Suitable for larger organisations who need to support the definition and control of programming centrally and execute at remote locations using Sepura Radio Manager 2 clients.

<sup>1</sup> – Further information available on request.

All Radio Manager references relate to Radio Manager 2.

Sepura's policy is to continually improve its products and services. The features and facilities described in this document were correct at publication, but are subject to change without notice.