



BR1 Mini

Durable. Unbeatable Price Performance.



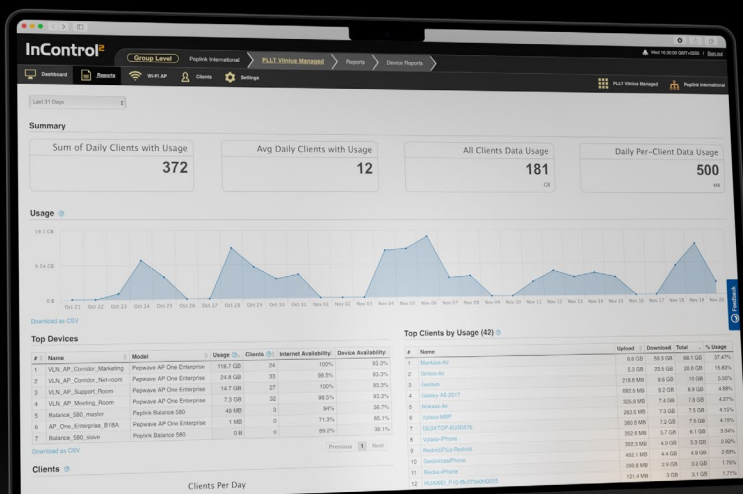


Just one remarkable device

Engineered with the highest quality build in mind. Sleek outside, yet ruggedized inside, this device has been built to withstand whatever deployment scenario thrown at it.

Stay in touch with InTouch

InTouch extends your reach to third party devices connected to the BR1 Mini. Remotely view, configure or troubleshoot third party devices, all within the InControl2 environment, eliminating the need for a separate and costly OOBM infrastructure.



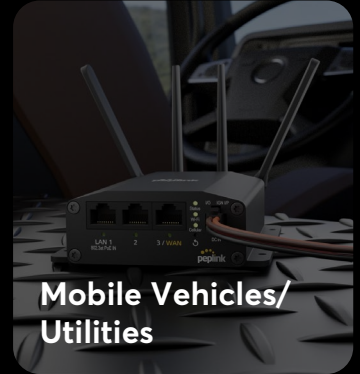
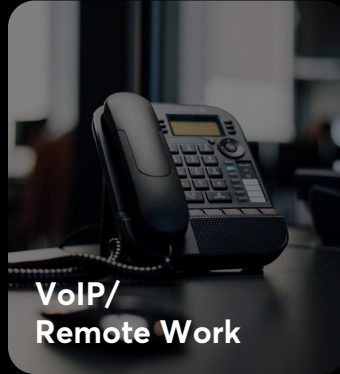
Manage with confidence

Control the BR1 Mini using InControl2 cloud-based endpoint management system. Generate useful reports and push configurations, as you remotely access any Peplink device with ease.

InControl²



Use Cases



Why BR1 Mini?

Remote Access to Third Party Device Interface (**InTouch**)

Other Solutions

will require network engineers to maintain and be costly



Our BR1 Mini

enables access to linked devices through a single platform

Seamless Connection Transfer Without Interruption (**Hot Failover**)

Other Solutions

will experience network interruptions



Our BR1 Mini

provides seamless network connectivity

Option to Enable Additional Features (**Optional Subscription**)

Other Solutions

require licenses for features or otherwise lock the device



Our BR1 Mini

offers an optional package inclusive of several features

Improve your Video and Collaboration (**WAN Smoothing**)

Other Solutions

may experience jitter and delays



Our BR1 Mini

improves the quality of real-time applications such as Zoom / Teams

Private LTE Network Availability (**CAT-7**)

Other Solutions

operate within limited bands that don't have access to private LTE



Our BR1 Mini

can operate within LTE bands dedicated to private LTE networks

Privately Hosted Management Platform (**On-Premise Network**)

Other Solutions

are managed only through cloud-based platforms



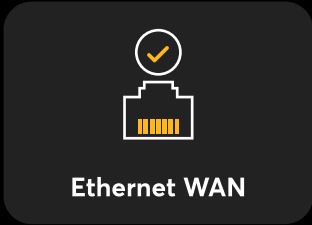
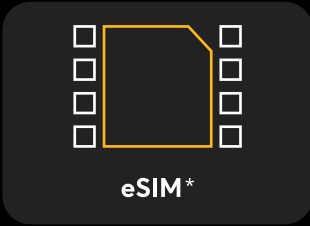
Our BR1 Mini

can be managed through a platform hosted on private server hardware



Now Available on PrimeCare

Launching the BR1 Mini on PrimeCare[^], giving the device prime access to InControl2, eSIM compatibilities*, increased VPN throughput, more PepVPN peers, WAN Activation, Wi-Fi WAN, Hot Failover, Smoothing, Bandwidth Bonding* and standard warranty & support.



* Available with Firmware 8.4.0 or above.

[^] With Firmware 8.3.1, PrimeCare includes all feature pack features (WAN Activation, Wi-Fi WAN, Hot Failover & WAN Smoothing).

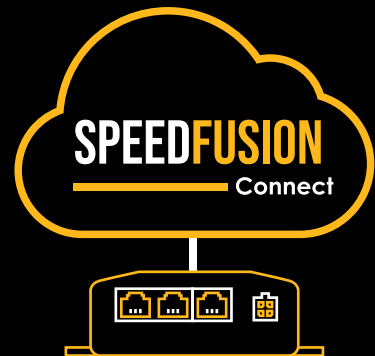
Plug and play, anyone?

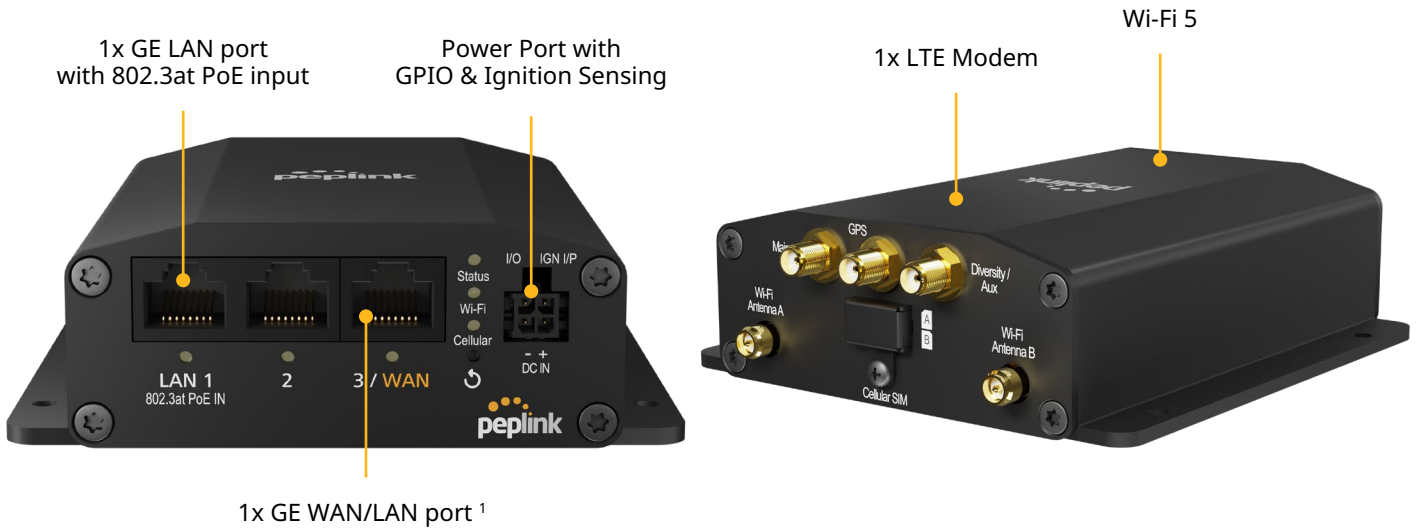
SpeedFusion Connect* services makes the BR1 Mini the ultimate plug-and-play device. Power up, switch on, and get connected. SpeedFusion Connect also works with Peplink technologies such as Hot Failover[^], ensuring reliable connectivity is accessible at all times.

Subscribe to SpeedFusion Connect Services

* SpeedFusion Connect is available in select countries and regions. [Learn more.](#)

[^] Feature Pack is required to utilise the benefits of Peplink technology and services.





Specifications

| | | | |
|--|---|--|---|
| WAN Interface | 1x 10/100/1000M Ethernet ¹ 1x Embedded Cellular Modem with Redundant SIM Slots | Antenna Connectors | 2x SMA Cellular Antenna Connectors 2x RP-SMA Wi-Fi Antenna Connectors 1x SMA GPS Antenna Connector |
| LAN Interface | 2x 10/100/1000M Ethernet | Power Input | Power Port: 10V – 30V DC AC Adapter: AC Input 100V–240V / DC Output 12V Power over Ethernet 802.3at |
| Wi-Fi Interface | Simultaneous Dual-Band (2.4GHz / 5GHz) Wi-Fi 5, 2X2 MIMO Wi-Fi WAN ¹ and/or AP | Power Consumption | 13W (nominal), 18W (max.) |
| SpeedFusion features | Hot Failover ¹ / Smoothing ¹ / Bandwidth Bonding ^{1 2} | Dimension | 5.0 x 4.2 x 1.4 inches / 125.7 x 107 x 35 mm |
| Number of SpeedFusion VPN Peers | 2 / 5 ³ | Weight | 0.95 pounds / 430 grams |
| Feature | GPIO, Ignition Sensing | Operating Temperature | -40° – 149°F / -40° – 65°C |
| Router Throughput | 300Mbps | Humidity | 15% – 95% (non-condensing) |
| SpeedFusion VPN Throughput | | Certifications | FCC, CE, RoHS UL 121201 (Class I and Division 2) E-Mark (Motor Vehicle) EN 61373 Shock and Vibration Resistance EN 50155 Railway Applications EN 61000 Electromagnetic Compatibility |
| - No Encryption | 80Mbps | Package Content | 1x BR1 Mini 2x LTE Antennas (ACW-235) 2x Dual Band Wi-Fi Antennas (ACW-342) 1x GPS Active Antenna (ACW-232) 1x 12V 2A 4pin Power Supply (ACW-632) |
| - 256-bit AES | 60Mbps | Package Content for MAX-BR1-MINI-LTEA-B-T-JPC-PRM | 1x BR1 Mini 2x iAN067 LTE Antennas 2x Dual Band Wi-Fi Antennas (ACW-342) 1x GPS Active Antenna (ACW-232) |
| Recommended Users | 1-60 | SIM Options | Nano-SIM (4FF) Peplink eSIM ⁵ BYO eSIM (2 profiles) ^{2 5} |
| Cellular Data Rate ⁴ (Downlink/Uplink) | CAT-7: 300 Mbps/150 Mbps CAT-6: 300 Mbps/50 Mbps CAT-4: 150 Mbps/50 Mbps | Warranty | 1-Year Limited Warranty |

¹ Available with PrimeCare subscription or a feature pack add-on license.

² Available with Firmware 8.4.0 or above.

³ Requires a PrimeCare subscription, complimentary for the first year.

⁴ Maximum theoretical data rate.

⁵ Models with selected SKU support eSIM. Details can be found [here](#).

Ordering Information

| Product Code | Regions [^] | LTE Bands | 3G Bands |
|---|--|--|---|
| MAX-BR1-MINI-LTEA-US-T-PRM Embedded Modem(s): 1x CAT-7 | North America* *US Carrier Certifications: AT&T, T-Mobile, Verizon, FirstNet | B2, B4, B5, B7, B12, B13, B14, B25, B26, B41, B42, B43, B48, B66, B71 | HSPA+: B2, B4, B5 |
| MAX-BR1-MINI-LTEA-US-DC-T-PRM Embedded Modem(s): 1x CAT-7 | North America* *US Carrier Certifications: AT&T, T-Mobile, Verizon, FirstNet | B2, B4, B5, B7, B12, B13, B14, B25, B26, B41, B42, B43, B48, B66, B71 | HSPA+: B2, B4, B5 |
| MAX-BR1-MINI-LTEA-E-T-PRM Embedded Modem(s): 1x CAT-7 | APAC, EMEA | B1, B3, B7, B8, B20, B28, B32, B38, B40, B41, B42, B43 | HSPA+/WCDMA: B1, B5, B8 |
| MAX-BR1-MINI-LTEA-B-T-PRM Embedded Modem(s): 1x CAT-6 | APAC, EMEA | B1, B2, B3, B4, B5, B7, B8, B12, B13, B14, B17, B18, B19, B20, B25, B26, B28, B29, B30, B38, B39, B40, B41, B42, B43, B48, B66, B71 | HSPA+/WCDMA: B1, B2, B4, B5, B6, B8, B9, B19 |
| MAX-BR1-MINI-LTEA-B-T-JPC-PRM Embedded Modem(s): 1x CAT-6 | Japan | B1, B2, B3, B4, B5, B7, B8, B12, B13, B14, B17, B18, B19, B20, B25, B26, B28, B29, B30, B38, B39, B40, B41, B42, B43, B48, B66, B71 | HSPA+/WCDMA: B1, B2, B4, B5, B6, B8, B9, B19 |
| MAX-BR1-MINI-LTE-US-T-PRM Embedded Modem(s): 1x CAT-4 | North America* *US Carrier Certifications: AT&T, T-Mobile, Verizon, FirstNet | B2, B4, B5, B12, B13, B14, B66, B71 | WCDMA/HSPA+/DC-HSPA+: B2, B5 |
| MAX-BR1-MINI-LTE-MX-T-PRM Embedded Modem(s): 1x CAT-4 | APAC, Latin America, Australia | B1, B2, B3, B4, B5, B7, B8, B28, B40 | WCDMA/HSPA+/DC-HSPA+: B1, B2, B5, B8 |
| MAX-BR1-MINI-LTE-E-T-PRM Embedded Modem(s): 1x CAT-4 | APAC, EMEA | B1, B3, B5, B7, B8, B20, B38, B40, B41 | WCDMA/HSPA+/DC-HSPA+: B1, B5, B8 |

[^] Regions are for reference only. For specific location compatibility, please refer to the bands.

Featured Add-on

| Product Code | Description |
|----------------------------|---|
| PRM-A-1Y / PCP-A-1Y | PrimeCare A / PrimeCare+ A (1-Year) |
| PRM-A-2Y / PCP-A-2Y | PrimeCare A / PrimeCare+ A (2-Year) |
| PRM-A-4Y / PCP-A-4Y | PrimeCare A / PrimeCare+ A (4-Year) |
| MAX-BR1-MINI-LC-FP | Feature pack for BR1 Mini enables Ethernet WAN, Wi-Fi WAN, Hot Failover, Smoothing, Bandwidth Bonding |
| MAX-BR1-MINI-BD-FP-2Y | MAX BR1 Mini Bundle Offer - 2 year PrimeCare extension & complimentary feature pack |
| MAX-BR1-MINI-BD-FP-4Y | MAX BR1 Mini Bundle Offer - 4 year PrimeCare extension & complimentary feature pack |
| MAX-BR1-MINI-BD-FP-PLUS-2Y | MAX BR1 Mini Bundle Offer - 2 year PrimeCare+ extension & complimentary feature pack |
| MAX-BR1-MINI-BD-FP-PLUS-4Y | MAX BR1 Mini Bundle Offer - 4 year PrimeCare+ extension & complimentary feature pack |
| ANT-MB-22G-S-B-6 | Mobility 22G - 2x2 MIMO Cellular and Wi-Fi Antenna System with GPS (Black) |
| ANT-MB-22G-S-W-6 | Mobility 22G - 2x2 MIMO Cellular and Wi-Fi Antenna System with GPS (White) |
| ANT-SLM-22G-S-B-6 | Slim 22G - 2x2 MIMO Cellular and Wi-Fi Antenna System with GPS (Black) |
| ACW-634 | 10ft/3m DC Power Cable |
| ACW-643 | Vehicle Cigarette to Molex Power Cable |
| ACW-791 | Peplink 4-Pin Microfit to USB-C Power Cable |
| ACW-DIN-BR1-MINI | DIN Rail mount kit |