

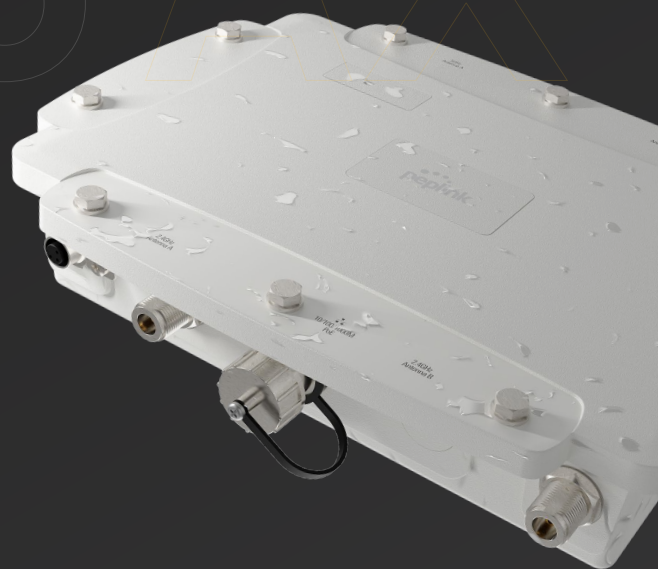


AP Pro AX

Super Rugged and Wi-Fi 6 Ready

Built like a Tank

A metal **IP67 enclosure** provides a solid exterior to protect not only the device, but your connection as well.



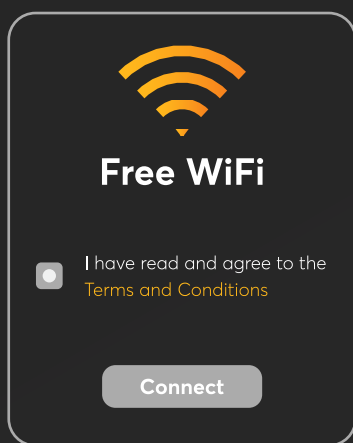
Enterprise-Grade Roaming Speeds

Bring in an **unbreakable connection** wherever you need it. Experience the speed of an office network even while you're on the field.

Mesh Capability

With **Wi-Fi mesh support**, have the flexibility to deploy the device wherever it's needed and eliminate all the blindspots in your network.





Turnkey Captive Portals

Captive portals are simple to create and easy to customize. Implement a **guest network** with just a few clicks.

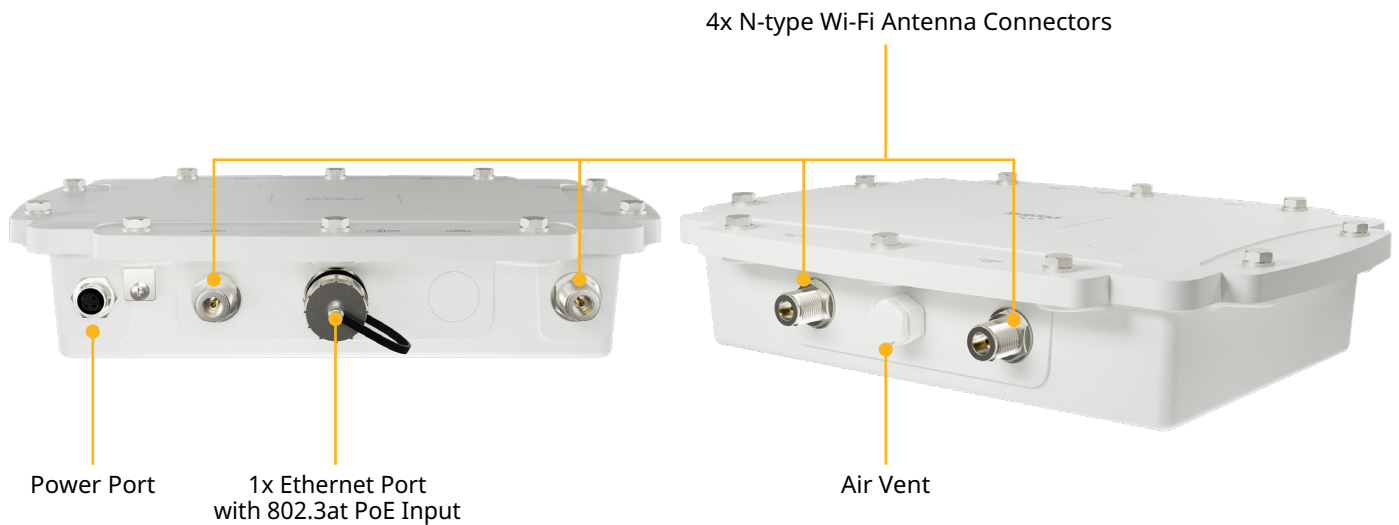
Seamless Integration within Peplink's Ecosystem

Built for use in the **Peplink Ecosystem**, link up the new access point to the rest of your Peplink network for instant connectivity.



Perfect for Demanding Deployments

Provide **Wi-Fi 6** connections to factories, construction sites or harbor sides. No matter the weather, no matter the conditions.



Specifications

Ethernet Ports	1x 10/100/1000M Ethernet	Power Input	802.3at PoE ² Power Port: 12V DC
Wi-Fi Standard	Simultaneous Dual-Band (2.4GHz/5GHz) Wi-Fi 6 2X2 MIMO	Power Consumption	14.5W (max.)
Data Rates	2.4 GHz: up to 574 Mbps 5 GHz: up to 1200 Mbps	Operating Temperature	-40°F - 149°F -40°C - 65°C
Channel Width	20/40/80 MHz	Warranty	1-Year Limited Warranty
Recommended clients per Radio	256	Network	Bridge Mode Router (NAT) Mode Mesh Wireless Distribution System (WDS) Support for PPPoE, Static IP, DHCP Management VLAN Spanning Tree Protocol
SSID Per Radio	16	Radio	Multiple SSID Auto Channel Selection Transmit Power Adjustment Neighbor AP Detection
Transmit Power	2.4GHz: 24dBm 5GHz: 25dBm	AP Security	Open WPA/WPA2/WPA3-Personal WPA/WPA2-Enterprise
Antenna	External Omni Directional Antennas ¹ 2x 8dBi - 2.4GHz 2x 8dBi - 5GHz	Device Management	Web Administrative Interface InControl Cloud Management Peplink AP Controller SNMP v1, v2c and v3
Connector type	4x Female N-Type Wi-Fi Antenna Connectors		
Enclosure	Plenum-rated enclosure		
Dimensions	9.0 x 12.2 x 2.6 inches 230 x 310 x 66 mm		
Weight	4.85 pounds / 2.2 kg		

¹ External Omni Directional Antennas are not included in the package.

² AC/DC adapter and PoE Injector are not included.
Specifications are subject to change without notice.

Specifications

Client Management	Per SSID VLAN with QoS (802.1p/802.1q) Bandwidth Control MAC Address Filtering Layer 2 Client Isolation Limit on Max. Number of Clients Per Client VLAN with RADIUS VLAN with VLAN Pool Bandwidth Control Multicast Filter IGMP Snooping/Multicast Enhancement	Captive Portal by InControl	
		Package Contents	AP Pro AX, Water Proof DC Power Plug for IP67 (ACW-636), 1x Waterproof Ethernet Connector Kit (ACW-112), Mounting Kit (ACW-723)

Ordering Information

Product Code	Description
APP-AX-IP67	2 x 2 MU-MIMO Wi-Fi 6 AP, Simultaneous Dual-Band 802.11a/b/g/n/ac/ax, Industrial-grade in metallic waterproof and dust-tight IP67 outdoor enclosure.

Featured Add-on

Product Code	Description
ACW-107	802.3af/at PoE Injector. Compatible with MAX Hotspot and AP One AX Series
ACW-825	2.4GHz & 5GHz Outdoor Wi-Fi Antenna Kit include 2x 2.4GHz and 2x 5GHz Outdoor Wi-Fi Omni Antenna (2x ACW-202 & 2x ACW-308)