

# PROEQUIP DUAL USB POWER SUPPLY

USB-C 20W & USB-A 18W

Fast charger with both USB-A and USB-C outlet.

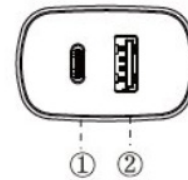
## FEATURES & BENEFITS

- USB-C PD
- Quickcharge 3.0
- USB-A with support for QC 3.0
- Protection for
  - Over-load
  - Over-voltage
  - Over-heated
  - Over-current
  - Short-circuit
- Qualcomm quick charge 3.0 (backwards compatible with QC1.0, 2.0, 3.0)

## SPECIFICATION

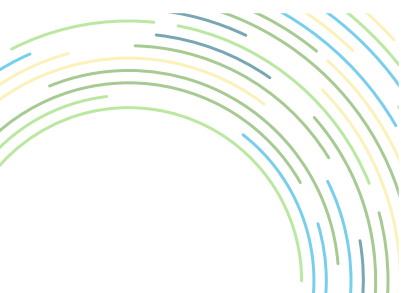
Input Voltage	AC 100-240V
Output USB-C	DC 5V/3A or 9V/2.22A or 12V/1.67A
Output USC-A	DC 5V/3A or 9V/2A or 12V/1.5A
Input voltage	AC 100-240V
Max output power	20W

**PROEQUIP**  
by Northcom



- ① Type-C charging port:  
5.0V~3.0A(15.0W) or 9.0V~2.22A(20.0W)  
or 12.0V~1.67A(20.0W)
- ② Qualcomm quick charge 3.0 charging port:  
5.0V~3.0A (15.0W) or 9.0V~2.0A (18.0W)  
or 12.0V~1.5A (18.0W)
- ①+②: 5.0V~3.6A (18.0W)

MODEL	ART.NO
ProEquip Dual USB Power Supply USB-C (20W) & USB-A (18W)	30588



**NORTHCOM**  
WHEN COMMUNICATION MATTERS

www.northcom.se