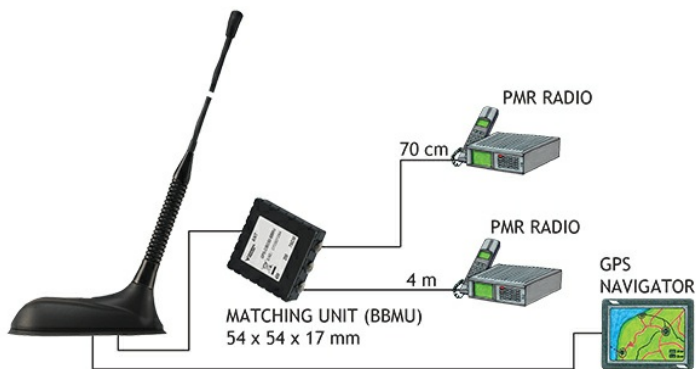


Colinear Mobile Antenna for the 4m and TETRA Bands

DESCRIPTION

- External antenna whip mounted on the GPS-Combi mount.
 - Polyethylene-covered flexible whip.
 - Easily removable whip for cleaning in car-washing machine.
- GPS-antenna for fixed installations.
 - Full hemispherical coverage.
 - Built-in high-gain, low-noise amplifier.
 - Right-Hand Circular Polarization (RHCP).
 - 5 V supply voltage (3 V and 12 V respectively available on request).
 - DC supply via RF-connector.
 - Matching unit (BBMU) included.
- When ordering the antenna, please state the centre frequency on each band.

CONNECTION DIAGRAM



SPECIFICATIONS

Electrical	
Model	GPS-C 4/TETRA-S BBMU/...
Frequency	4 m : 74.2 - 87.5 MHz 70 cm : 380 - 400 MHz
Antenna Type	Collinear mobile antenna
Max. Input Power	15 W
Polarisation	Vertical
Impedance	50 Ω
VSWR	74.2 - 77.7 and 84 - 87.5 MHz : ≤ 2.5:1 380 - 400 MHz : ≤ 2.0:1
Gain (EIA RS-329-1)	4 m : approx. -3 dB 70 cm : approx. 1 dB (acc. to EIA RS-329-1)
Mechanical	
Materials	Whip : Glass fibre whip with copper wire winding, polyethylene-covered Black-chromed brass Spring : Black-chromed stainless steel
Colour	Black
Height	Approx. 670 mm / 26.38 in.
Weight	Approx. 0.06 kg / 0.13 lb.
Mounting	On the GPS-Combi mount

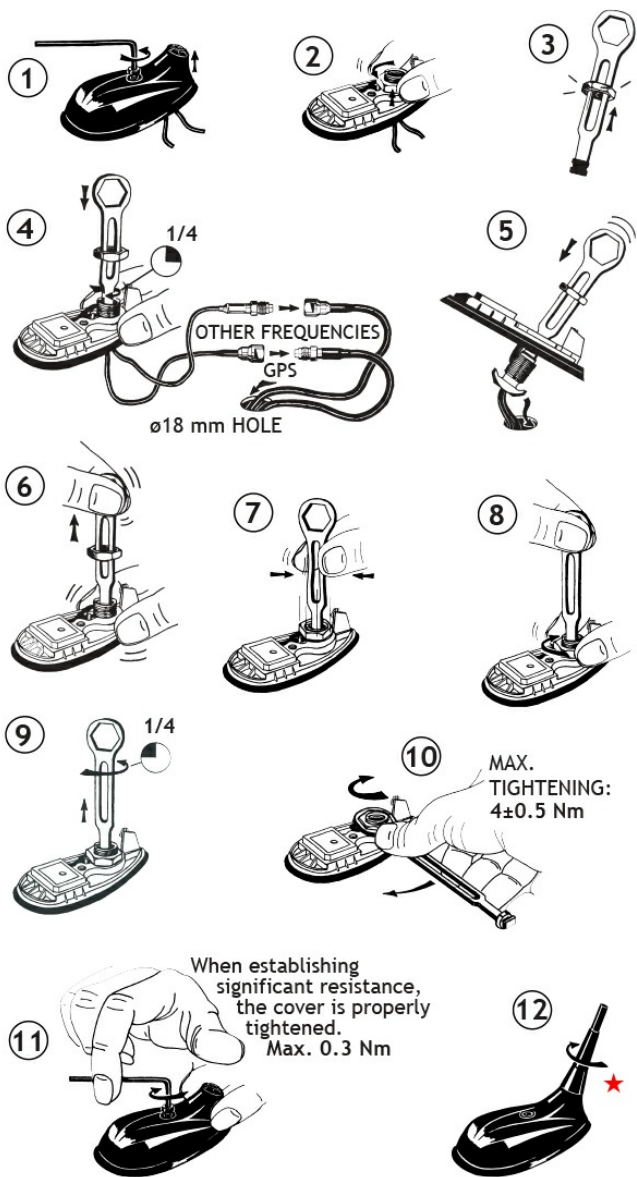


GPS Antenna	
P1dB (GPS Amplifier)	Approx. +7 dBm
Coverage (GPS)	Hemispherical
Gain (GPS)	28 dBic in axial direction (typ.)
Connection(s) (GPS)	FME(m) (male for GPS) + FME(f) (female for mobile antenna)
Mounting (GPS)	ø18.0 mm dia. hole for roof thickness up to 2.0 mm ø18.5 mm dia. hole for roof thickness 2.0 - 2.5 mm ø19.0 mm dia. hole for roof thickness 3.5 - 7.5 mm Tools for mounting included
Antenna Type (GPS)	Active patch antenna
Cross Polar Discrimination (GPS)	> 10 dB (typ.)
VSWR (GPS Amplifier)	< 2.0:1
Operating Temperature Range (GPS)	-35 °C to +75 °C
Selectivity (GPS)	> 45 dB down @ ± 45 MHz
Installation Torque (GPS)	4 ± 0.5 Nm
Frequency (GPS)	1575 MHz
Weight (GPS)	Approx. 0.114 kg / 0.25 lb.
Power Supply (GPS)	5 ± 0.5 V DC (3 V resp. 12 V on request)
Current Consumption (GPS Amplifier)	0.025 mA
Dimensions (GPS)	Approx. 30 x 89 mm / 0.9 x 2.9 in.
Max. Roof Thickness (GPS)	2.5 mm or 3.5 - 7.5 mm / 0.10 in. or 0.14 - 0.30 in.
Colour (GPS)	Black
Polarisation (GPS)	RHCP
Impedance (GPS)	50 Ω
Materials (GPS)	Cu-nite brass Stainless steel Reinforced thermoplastic

ORDERING

Model	Product No.	Description
GPS-C 4/TETRA-S BBMU	132000139	Max. Roof thickness 2.5 mm
GPS-C 4/TETRA-S BBMU/7mm	132000129	Roof thickness : 3.5 - 7.5 mm

MOUNTING INSTRUCTIONS



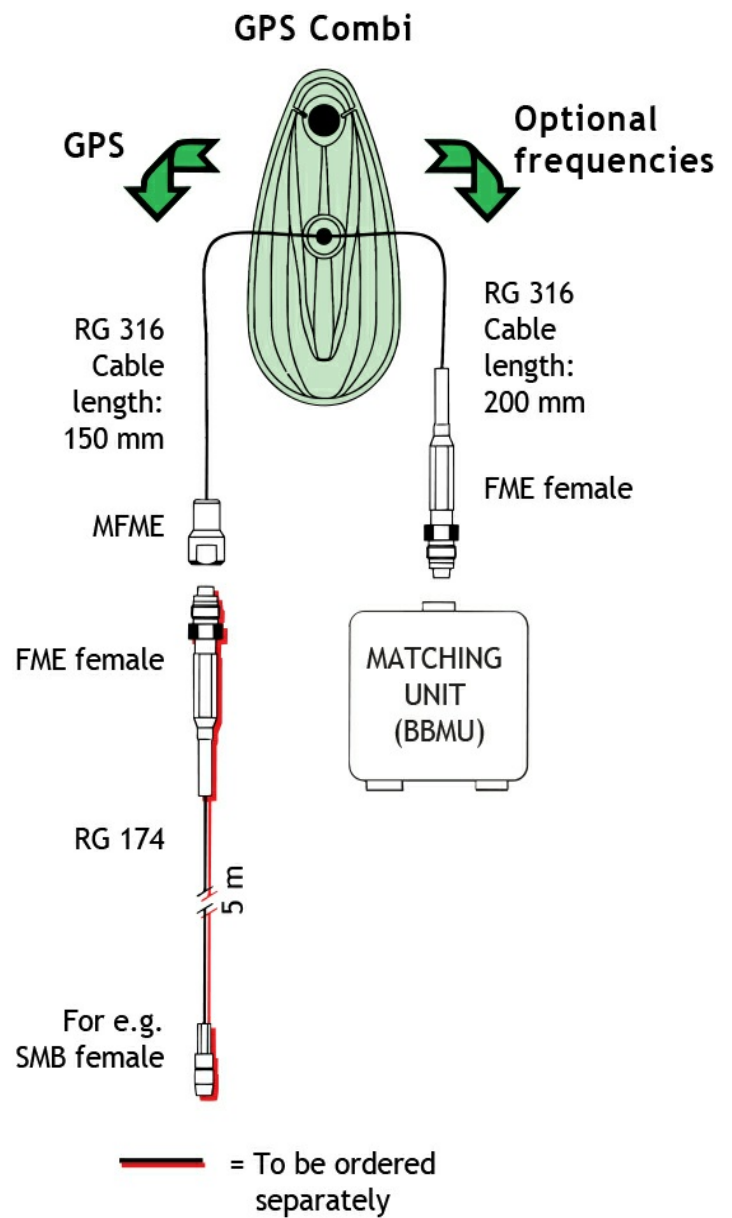
★ The whip should always be dismantled during car wash.

Do not use sealer on rubber gasket or other places.

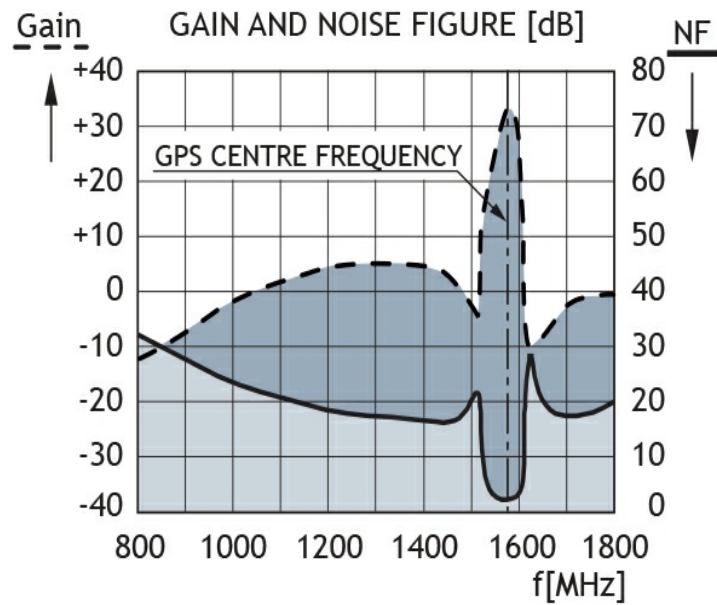
PLEASE NOTE

The cable between the GPS-C Mount and BBMU box must not be extended.

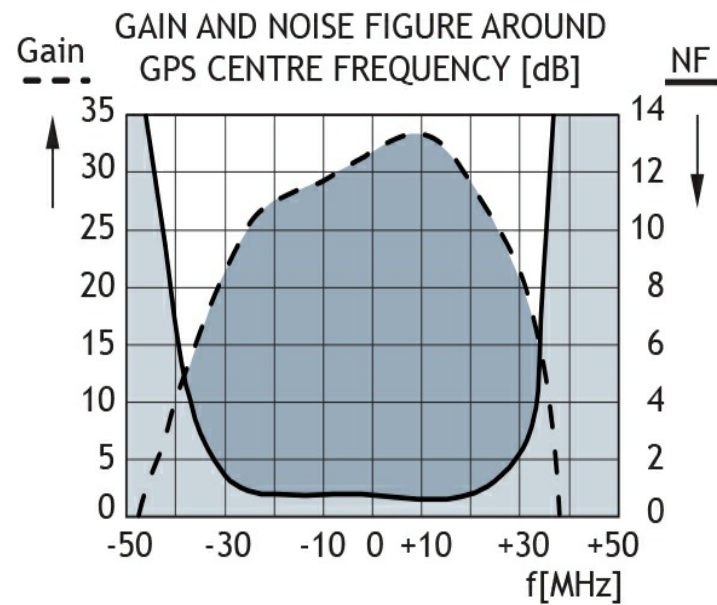
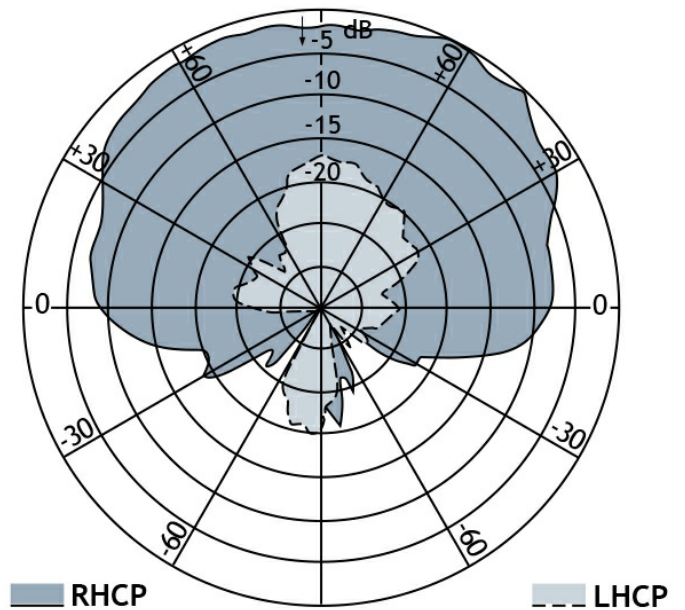
CABLE MOUNTING



TYPICAL RESPONSE CURVES



VERTICAL RADIATION PATTERN



EU AND UK DECLARATION OF CONFORMITY

Hereby Amphenol Procom declare that the product type GPS-C 4/TETRA-S BBMU/... is in compliance with EU Directive 2014/53/EU and the UK Radio Equipment Regulations 2017 (S.I. 2017 No. 1206). The full text of the Declaration of Conformity is available at:

<https://amphenolprocom.com/images/shop/catalog/pdf-for-catalogues/Declaration-of-Conformity-GPS-C-1.pdf>

